

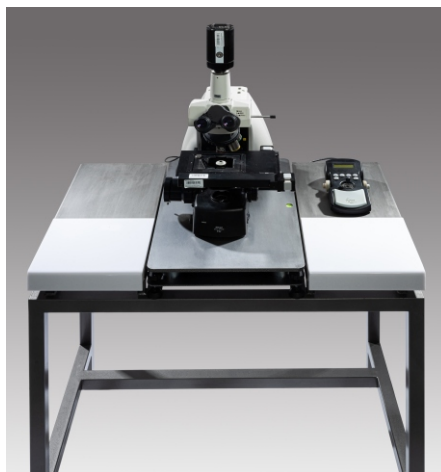
## Stimulators for Brain Research

- Bipolar Stimulus Isolator with Rechargeable Battery
- Monopolar Stimulus Isolator with Rechargeable Battery
- Battery Manager
- Bipolar Stimulus Isolator with Floating Power Supply
- Monopolar Stimulus Isolator with Floating Power Supply
- BioStim Dual-processor Controller
- BioStim Computer Interface



## IVF Vibration Isolation Solutions

- STable Basics I: Damping Plate
- STable Basics II: Workstation with Embedded Damping Plate
- STable Alpha I: Elastomeric Vibration Isolation Table with Shelves
- STable Alpha II: Pneumatic Vibration Isolation Table with Shelves



## Ion Selective/Sensitive Amplifiers

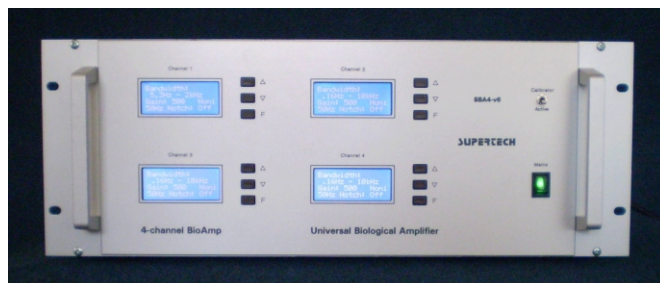
- Independent IS and Ref channels
- Extremely high (10 TeraOhm) input impedance
- Very high bandwidth (up to 10 kHz)
- Independent offset voltage controls
- Analog and DAQ-based arithmetic
- Single or multi-channel versions



## Designing, Prototyping and Manufacturing of Special Equipments

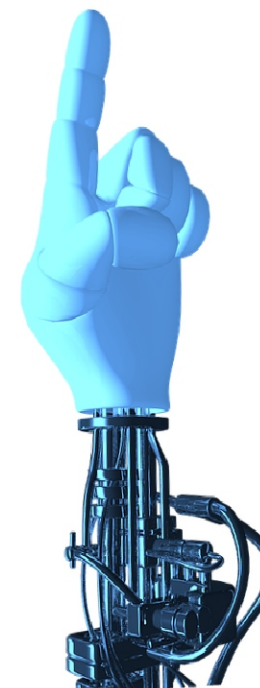
## Amplifiers for Electrophysiology

- Extracellular recording
- Intracellular recording
- Multi-unit activity and Field potentials
- Expandable multichannel configurations
- Preamplifiers with extra high CMRR
- EEG, EMG, ECG, Electroretinography



## In-vivo and In-utero Electroporator

- In-vivo electroporator for genetic manipulations in living animals
- Microprocessor-based programmable pulse sequence
- Exponential or square-wave pulse output
- 200V or 400V output voltage range



If you have got an idea to develop, but you have no enough resource, technology, experience, experts, capital, etc., please do not hesitate to contact us. Supertech Instruments is open to join to your new research or development projects. Supertech Instruments has got its own financial resources to finance development tasks, too. We are open for further discussions in every situation.